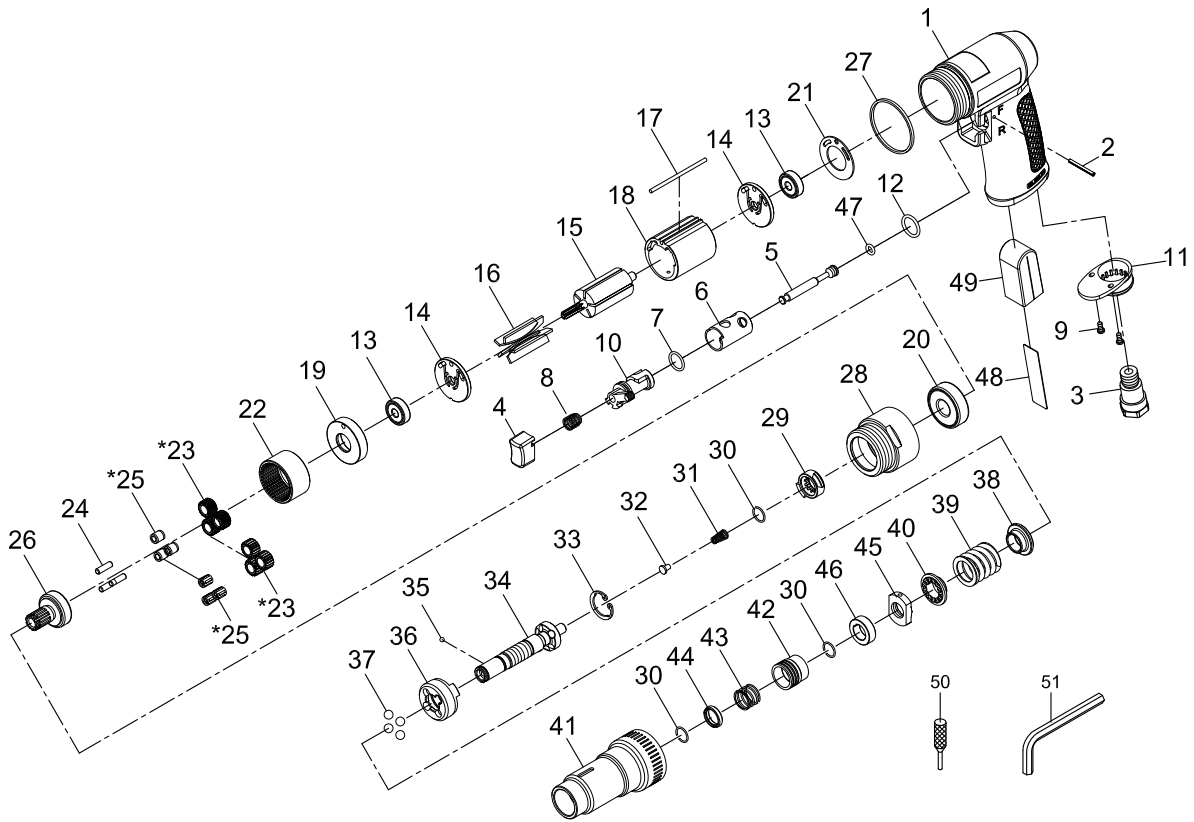


# 1/4" AIR SCREWDRIVER-EXTERNAL ADJUSTABLE CLUTCH



Index No.	Parts No.	Description	Index No.	Parts No.	Description
1	75-750001	Motor Housing	26	80226	Work Spindle
2	80202	Spring Pin (Ø2.5x24L)	27	75-725351	Decoration Ring
3	75-725303	Air Inlet	28	80228	Clamp Nut
4	795804	Trigger	29	80229	Drive Dog
5	80205-12	Valve Stem	30	80230	Retainer Ring (3)
6	80206	Reverse Bushing	31	80220	Spring
7	80209	O-Ring (Ø12xØ1.6)	32	80221	Spring Guide
8	75-730008	Valve Spring	33	80231	Snap Ring (RTW-21)
9	40309	Screw (2) (TS2.9)	34	80232	Cam Spindle
10	80210	Reverse Lever	35	40145	Steel Ball (1/8")
11	70110	Exhaust Diffuser	36	80234	Clutch
12	80247	O-Ring (Ø13.8xØ2)	37	80235	Steel Ball (4) (1/4")
13	030113	Ball Bearing (2) (626ZZ)	38	80236	Thrust Washer
14	80214	End Plate (2)	39	802F37	Spring
15	80215	Rotor	40	80238	Washer
16	80216	Rotor Blades (5)	41	802F41	Clutch Housing
17	80217-13	Pin	42	80242	Ball Retainer
18	80218-22	Cylinder	43	80243	Spring
19	80219	Front End Plate	44	80244	Washer
20	080227	Ball Bearing (6201Z)	45	802F39	Adjust Nut
21	80211	Motor Gasket	46	80240	Spacer
22	80222	Internal Gear	47	70107	O-Ring (Ø4.8xØ1.9)
*23	80223-11	Planet Gear (3)	48	75-750007	Iron Sheet
	80223-14	Planet Gear (3)	49	75-750020	Damping Material
24	30124	Pin (3) (Ø4x13.8L)	50	600324	Key
*25	80225	Bushing (3)	51	10022	Hex.Wrench (1/4")
	080245	Needle Bearing (3)			

\*Optional Parts

82-7500F-0001

01.20.2015