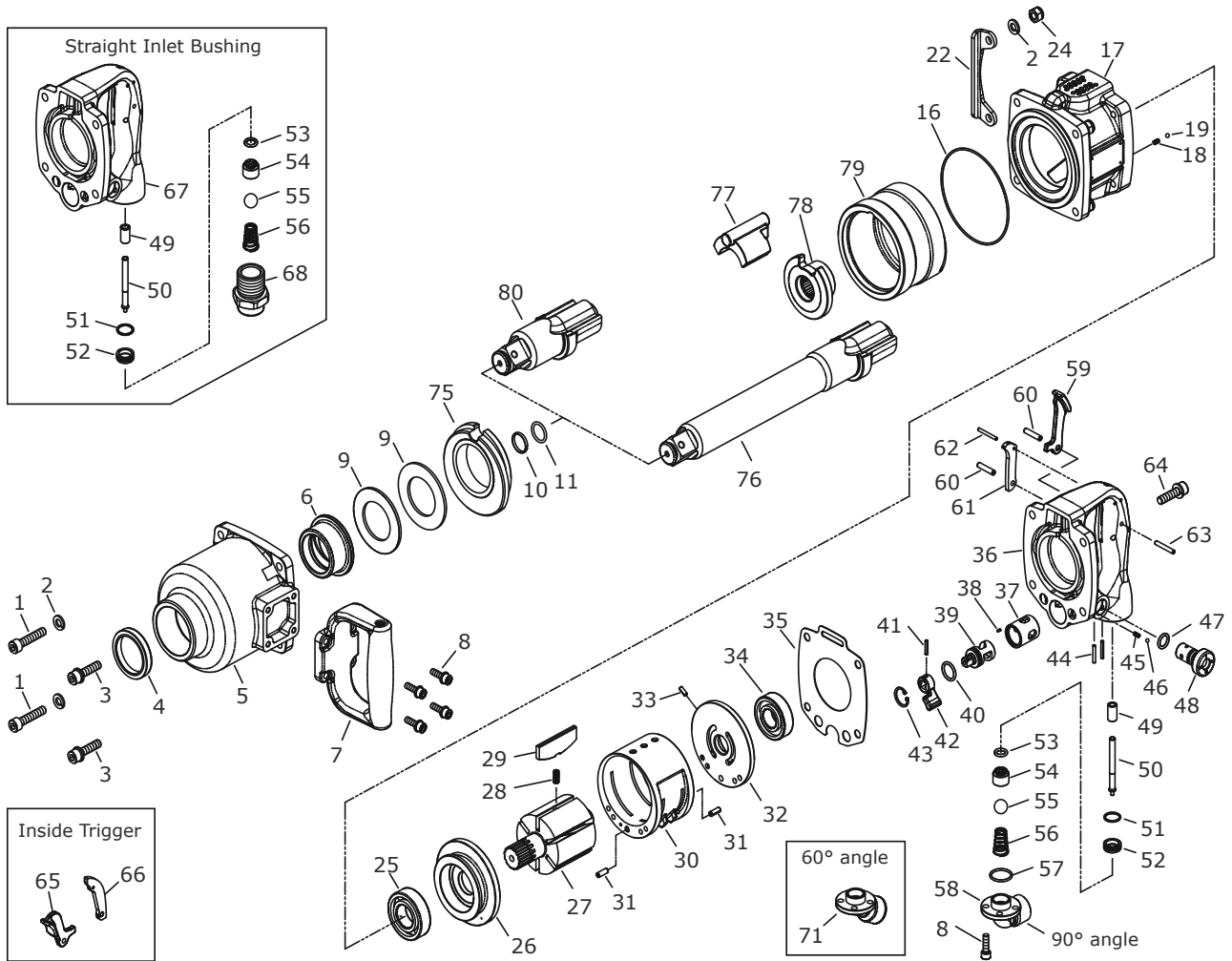


Technical Details	Speed RPM	Square Drive	Max. Torque Nm/ft-lb	Length mm/inch	Weight kg/lb	Air Consumption LPM / CFM	Air Inlet inch	Working Pressure Bar / PSI
<b>284   2</b> <b>284   2L</b>	4,800	1" (Standard) 1" (8' Long)	3,796 (2,800)	370 (14.6) 570 (22.4)	11 (24.2) 12.5 (27.5)	450 (16)	1/2	6.3 (90)



\* Due to our continuous improvement, all specifications are subject to change without prior notice.

Index No.	Description	Quantity	Index No.	Description	Quantity	Index No.	Description	Quantity
01	Screw	2	31	Spring Pin	2	54	Valve Stem	1
02	Spring Washer	6	32	Rear End Plate	1	55	Nylon Ball	1
03	Screw w/Wahser	2	33	Spring Pin	1	56	Spring	1
04	Seal	1	34	Ball Bearing	1	57	O-Ring	1
05	Hammer Case	1	35	Gasket	1	58	90° Angle Inlet Bushing	1
06	Anvil Bushing	1	36	Trigger Handle	1	59	Outside Trigger	1
07	Side Spade Handle	1	37	Bushing	1	60	Spring Pin	2
08	Screw w/Wahser	8	38	Pin	1	61	Plug (for Outside Trigger)	1
09	Hammer Washer	2	39	Reverse Valve	1	62	Spring Pin	1
10	Socket Retainer	1	40	O-Ring	1	63	Spring Pin	1
11	O-Ring	1	41	Spring Pin	1	64	Screw w/Washer	4
16	O-Ring	1	42	Reverse Valve	1	65	Inside Trigger	1
17	Motor Housing Assembly	1	43	Snap Ring	1	66	Plug (for Inside Trigger)	1
18	Spring	1	44	Spring Pin	2	67	Trigger Handle (for Straight Inlet)	1
19	Steel Ball	1	45	Spring	1	68	Straight Inlet Bushing	1
22	Housing Protector	1	46	Steel Ball	1	71	60° Angle Inlet Bushing	1
24	Lock Nut	4	47	O-Ring	1	75	Cage Bushing	1
25	Ball Bearing	1	48	Air Regulator	1	76	Anvil (8" Extended)	1
26	Front End Plate	1	49	Bushing	1	77	Hammer Dog	1
27	Rotor	1	50	Valve Tappet	1	78	Cam	1
28	Spring	6	51	O-Ring	1	79	Hammer Cage	1
29	Rotor Blade	6	52	Throttle Bushing	1	80	Anvil (Standard)	1
30	Cylinder	1	53	O-Ring	1			

\* Parts #76 or 80 needs to be assembled along with #10 & #11 (#10 & #11 can be individual purchasing)

\* Parts #05 needs to be assembled along with #04 & #06 (#04 & #06 can be individual purchasing)